

COMPANION

TRUSTED SINCE 1941

PORTABLE POWER PACK

44 AMP HOUR



OWNERS MANUAL

Part No. 522390

IMPORTANT: please read, understand and follow the instruction manual before first use. Keep these instructions for future reference.

SAFETY INFORMATION

Never expose the power pack to rain, water, snow or excessive moisture.

When charging the power pack, DO NOT expose to open flame or cigarettes

UNDERSTANDING YOUR APPLIANCE

CHARGE INPUT VIA AC ADAPTOR (INCLUDED)

DISPLAY SWITCH

RESET SWITCH RESTORES POWER TO THE DIGITAL DISPLAY AND ON/OFF SWITCHES

DIGITAL DISPLAY WITH VOLTAGE AND AMPERAGE METER

OVERLOAD PROTECTION BY RESETTABLE CIRCUIT BREAKERS

12V DC CIGARETTE LIGHTER SOCKET AND ON/OFF SWITCH WITH LED INDICATOR

CHARGING LED INDICATOR (GREEN)

LOW VOLTAGE WARNING LED INDICATOR (RED) WITH AUDIBLE ALARM

5V DC 2A USB PORT WITH ON/OFF SWITCH

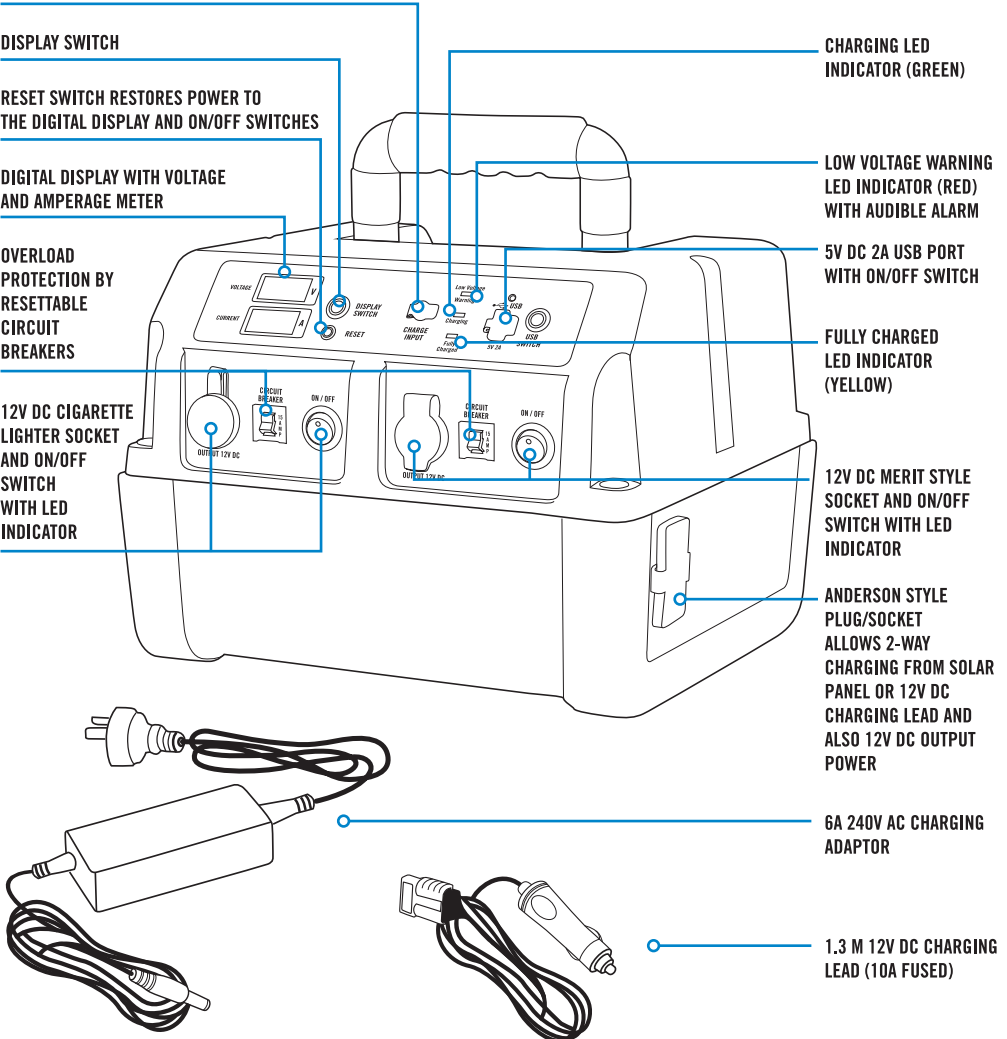
FULLY CHARGED LED INDICATOR (YELLOW)

12V DC MERIT STYLE SOCKET AND ON/OFF SWITCH WITH LED INDICATOR

ANDERSON STYLE PLUG/SOCKET ALLOWS 2-WAY CHARGING FROM SOLAR PANEL OR 12V DC CHARGING LEAD AND ALSO 12V DC OUTPUT POWER

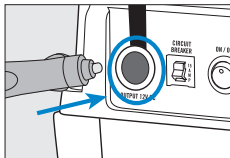
6A 240V AC CHARGING ADAPTOR

1.3 M 12V DC CHARGING LEAD (10A FUSED)

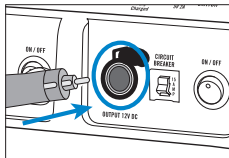


POWER APPLIANCES

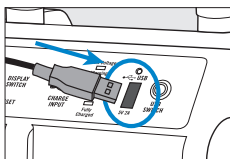
Step 1. Connect the appliance's power plug into the corresponding socket: A, B, C or D.



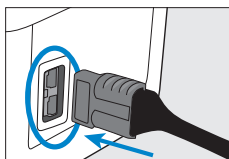
A. 12V DC cigarette lighter socket



B. 12V DC Merit style plug socket

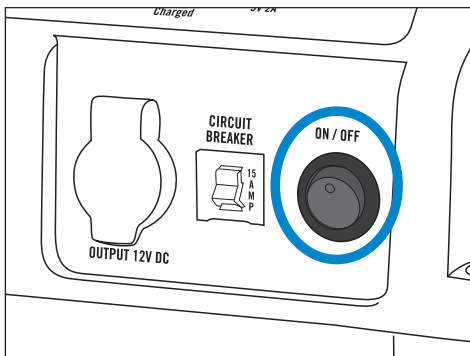


C. 5V DC USB port



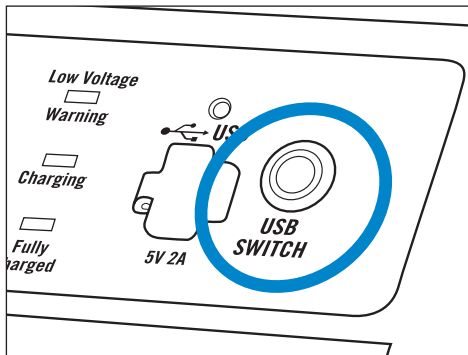
D. 12V DC Anderson style plug socket

Step 2. Press the ON/OFF switch. The LED indicator should illuminate to show the power is supplied to the socket.



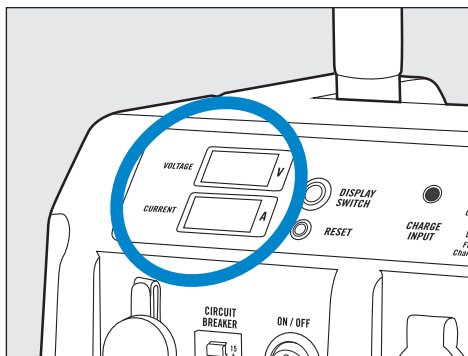
USB

Press the USB switch ON when charging 5V DC appliances via the USB port. The USB indicator (green) will illuminate.



Anderson

Insert the Anderson style plug from the appliance directly into the socket on the side of the power pack. The digital display will show the VOLTAGE (V) of the power pack. The CURRENT (A) amperage display will be zero (00.0).



OVERLOAD PROTECTION

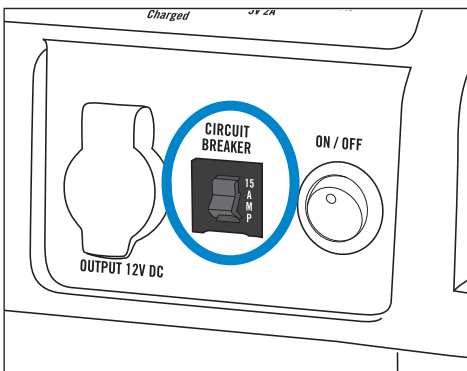
12V DC output

When an overload of 15 amp power draw is detected on a single DC output socket, the circuit breaker will automatically turn off the power to the socket to protect the power pack.

Switch OFF the DC output socket and disconnect the appliance from the power pack. Press the circuit breaker reset button to resume the power supply. Reconnect the appliance and switch ON the DC output socket.

When an overload of 16 amp combined power draw is detected from both DC output sockets, both circuit breakers will automatically turn off the power to the sockets to protect the power pack.

Switch OFF one of the DC output sockets and disconnect that appliance. Press both circuit breaker reset buttons to resume the power supply and reconnect one of the appliances only. Switch ON the DC output socket.



5V DC USB port

If a power overload is detected while charging a 5V DC appliance, the USB power supply will automatically reset within 2 minutes after the appliance has been disconnected from the USB port.

DIGITAL DISPLAY

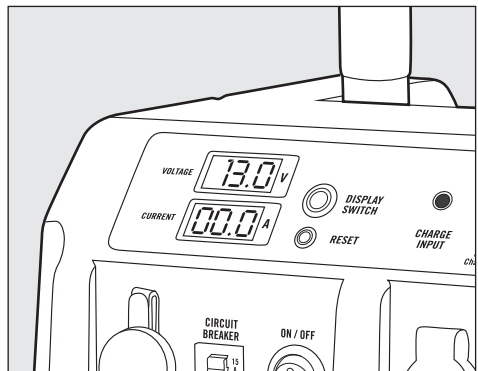
When the power pack is in use with an appliance connected, press the DISPLAY SWITCH and the digital display will show the VOLTAGE (V) of the power pack and the CURRENT (A) amperage used by the appliance.

When you press the DISPLAY SWITCH with no appliances connected, the digital display will show the VOLTAGE (V) of the power pack and zero (00.0) CURRENT (A) amperage.

When charging with the AC adaptor, the digital display will show the VOLTAGE (V) and the CURRENT (A) that the power pack is receiving.

When being charged by solar or the DC lead via the Anderson style plug socket, the digital display will indicate the VOLTAGE (V) of what the power pack is receiving from the charging source.

The CURRENT (A) will indicate zero (00.0) if there are no 12V DC accessories connected.



If the power pack is connected with an appliance and charged at the same time, the digital display will show the VOLTAGE (V) and CURRENT (A) that the power pack is receiving.

RESET SWITCH

To restore power to the digital display screen or the ON/OFF switches, press the RESET switch before recharging.

Note: All appliances and any charging adaptor (or solar panel) must be disconnected from the power pack for the RESET switch to operate.

The power pack will beep twice to confirm power has been restored. The power pack can now be recharged.

LOW VOLTAGE WARNING

The power pack is equipped with a low voltage (low battery capacity) warning system that activates automatically when the power pack voltage decreases to a low voltage level.

When the power pack is in use and the voltage decreases to 10.5V, the unit will automatically switch OFF and the LOW VOLTAGE WARNING indicator (red) will commence flashing with an audible single beep every 5 seconds for 10 minutes and then remain illuminated.

When the power pack is stored and not in use and the voltage decreases to 11.5V a single beep will continue every 10 minutes as a first alert warning to charge the power pack.

If the power pack is not recharged and the voltage continues to decrease to 10.5V, the unit will automatically switch OFF and the LOW VOLTAGE WARNING indicator (red) will commence flashing with a single beep every 5 seconds for 10 minutes.

The LOW VOLTAGE WARNING indicator (red) will then remain illuminated and the audible beep will stop.

IMPORTANT

the power pack must now be recharged. Fully recharge every 3 months.

To restore power to the digital display screen or the ON/OFF switches, press the RESET switch before recharging.

Note: All appliances and any charging adaptor (or solar panel) must be disconnected from the power pack for the RESET switch to operate.

Important: store fully charged to maximise performance and battery life of the power pack.

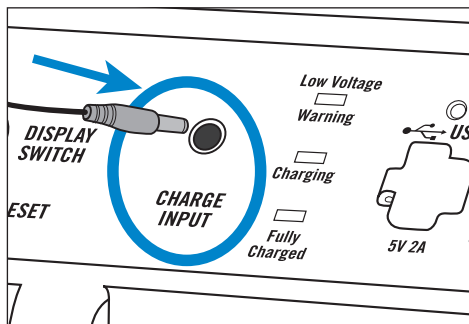
CHARGING THE POWER PACK

Using the 240V AC charging adaptor (included)

Insert the 5.5mm Jack Plug into the CHARGE INPUT socket on the front of the power pack and other lead to mains 240V AC. The CHARGING LED indicator will illuminate (green) once the power is turned on indicating that charging has commenced.

The fully charged indicator will illuminate (yellow) once the power pack is fully recharged.

Estimated charge time using the 240 AC adaptor is approximately 8–10 hrs.



Using the 12V DC charging lead (included)

Insert the 50A Anderson style plug into the input socket on the side of the power pack.

Note: The CHARGING LED indicator and the FULLY CHARGED LED indicator will not illuminate when the power pack is being charged by the 12V DC charging lead.

Pressing the DISPLAY SWITCH while being charged, the digital display will indicate the VOLTAGE (V) of what the power pack is receiving from the charging source.

Using a solar panel kit (not included)

IMPORTANT: A solar charger/regulator MUST be used in between the solar panel and power pack to control the voltage and current input. Failure to do so, will result in catastrophic failure of the power pack, causing potential explosion and or severe personal injury.

Insert a 50A Anderson style plug into the input socket on the side of the power pack.

Note: The CHARGING LED indicator and the FULLY CHARGED LED indicator will not illuminate when the power pack is being charged by a solar panel kit.

Pressing the DISPLAY SWITCH while being charged, the digital display will indicate the VOLTAGE (V) of what the power pack is receiving from the charging source.

Refer to the solar charger/regulator LED indicators or LCD readout for charging status.

IMPORTANT

When using appliances with high current draw i.e. portable fridge, it is recommended to use a solar panel in conjunction with the power pack. The solar panel must be equipped with a regulator/charge controller.

SPECIFICATIONS

Part No.	522390
Output voltage	12V DC and 5V DC (USB)
Battery type	2 x 22Ah AGM (Absorbed Glass Mat) batteries
Output	1 x 12V DC 15A Cigarette lighter socket 1 x 12V DC 15A Merit style socket 1 x 5V DC 2A USB port 1 x 12V DC Anderson style plug/socket
Overload protection	2 x 15A circuit breakers Low voltage warning system with LED Indicator and audible alarm Reset switch
Digital display	Digital voltage and current (amperage) display
Charging options	6A 240V AC adaptor (included) 12V DC lead (included) Solar panel via Anderson style plug/socket (solar panel not included)
Maximum charging current	15A (via Anderson style plug)
Dimensions	31L x 26W x 22.5H cm
Weight	16 kg

MAINTENANCE

Check the power pack voltage capacity regularly (minimum once a month) and charge the power pack as required.

When the LOW VOLTAGES WARNING occurs, fully charge the power pack immediately before use.

For further information or assistance please contact customer service on 1300 555 197 or email: service@companionbrands.com.au

Distributed by:

Adventure Trading Australia Pty Ltd

www.companionleisure.com.au