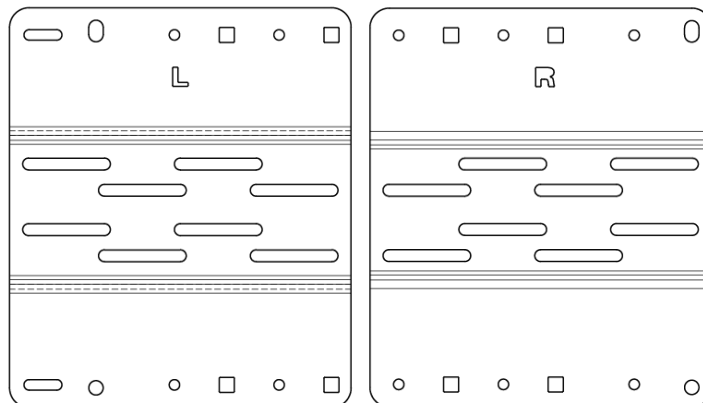


RACKS BRAX.®



HD ACCESSORY PLATE GEN 2 ***(8210)***

Assembly and Mounting Instructions

The fully engineered **RacksBrax HD Accessory Plate Gen 2 (8210)** takes the time and hassle out of side loading and unloading your MAXTRAX® MKII®, MAXTRAX® XTREME®, MAXTRAX® LITE®, TRED® PRO®, ARB x TRED® PRO®, TRED® GT®, TRED® HD® and TRED® COMPACT® recovery boards.

RACKSBRAX.

MAKE SIDE LOADING, UNLOADING AND TRANSPORT OF RECOVERY BOARDS A QUICK RELEASE OPERATION

The HD Accessory Plate Gen 2 may be attached directly to brackets but ... to get the most out of your HD Accessory Plate Gen 2, the plate is at its best when attached to a RacksBrax quick release HD Hitch so that the plate and recovery boards may be disconnected from the vehicle and unloaded quickly for storage when not in use.

When using the RacksBrax HD Accessory Plate Gen 2 with a Racksbrax HD Hitch (sold separately), you can load or unload your recovery boards in seconds.



Figure 1 HD Accessory Plate Gen 2 and recovery boards easily lift off the vehicle with the RacksBrax quick release HD Hitch.

Of course, when recovery boards are mounted on a vehicle and required for recovery, the recovery board pins are simply released and the boards only are removed.

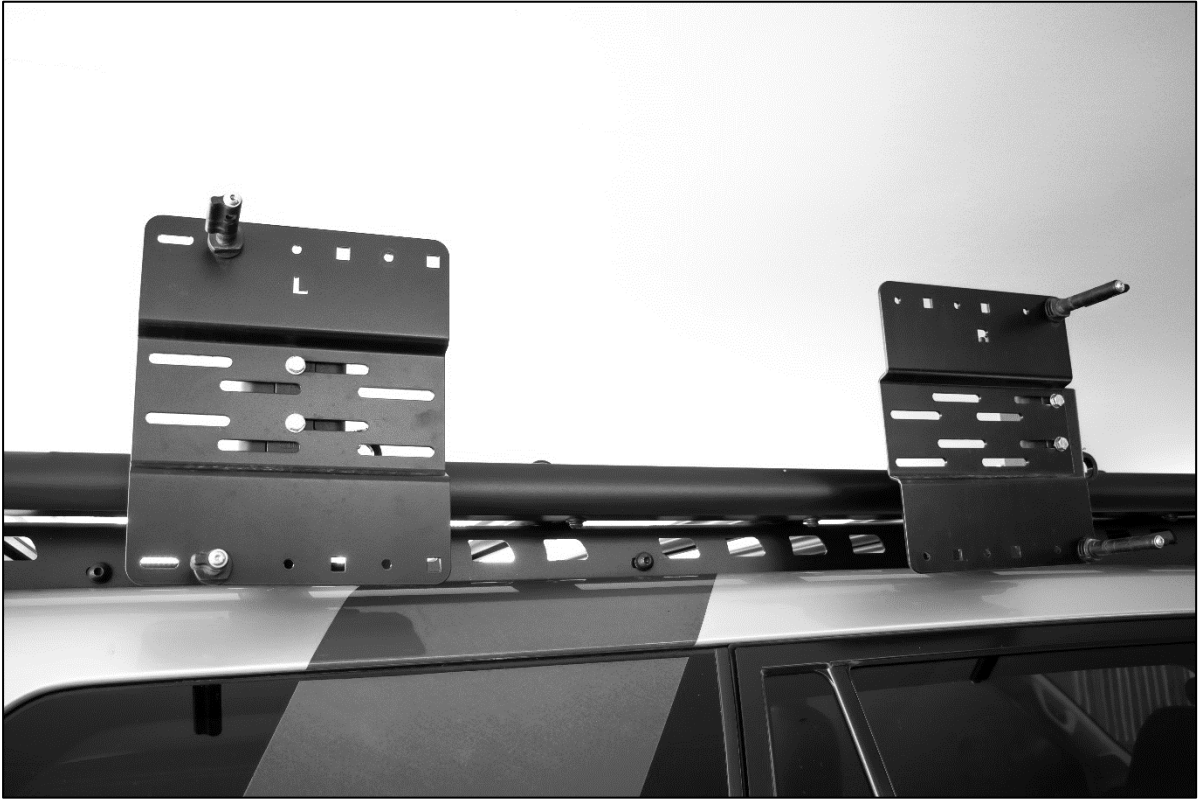


Figure 2 HD Accessory Plate Gen 2 with recovery boards removed for recovery action.

MOUNTING TO PLATFORMS WITH TRANSVERSE SLATS AND TO ROOF RACK BARS – SIDE MOUNTED

The primary idea of the HD Accessory Plate Gen 2 is to provide a means of side mounting of recovery boards leaving space on top of your roof rack for other gear.

It is especially applicable to loading recovery boards onto roof rack bars or roof rack platforms with transverse slats or bars. For these roof racks, brackets cannot be placed at the exact centres of the recovery board pin mounting holes. In this way the plate and recovery boards act as a horizontally adjustable bridge between bars/slats (and thus the bracket) and recovery board pin locations.

Provided centre-to-centre spacing of transverse bars or slats is between 450mm (17 ¾") and 940mm (37"), which covers most roof rack/vehicle combinations on the market, this solution will work.

RACKSBRAX.



Figure 3 HD Accessory Plate Gen 2 mounted to transverse bars on a roof rack platform.



Figure 4 HD Accessory Plate Gen 2 mounted on roof aero style rack bars.

RACKSBRAX.

MOUNTING TO PLATFORMS WITH LONGITUDINAL SLATS-SIDE MOUNTED

The RacksBrax HD Accessory Plate Gen 2 may also be used on roof rack platforms where members run longitudinally, along the length of the vehicle. Examples include the Rhino-Rack® Pioneer® series of platform racks and Rola Titan® racks.



Figure 5 HD Accessory Plate Gen 2 Mounted to a platform rack with longitudinal slats.

MOUNTING TO A ROOF RACK TRAY - SIDE MOUNTED



Figure 6 HD Accessory Plate Gen 2 mounted to a roof rack tray. *MAXTRAX® pictured left, TRED® pictured right.*

HEADROOM REDUCTION

As a bonus, when combined with the RacksBrax quick release HD Hitch, when boards are disconnected from the vehicle, residual headroom for side mounted recover boards is reduced by at least 100mm (4") leaving the Hitches in place ready for the next trip. The resulting, access to garages and carparks is drastically improved over other side mounting methods and leaves no recovery board pins protruding from the vehicle.

Reloading for the next trip is a simple, fast, no-tools operation.

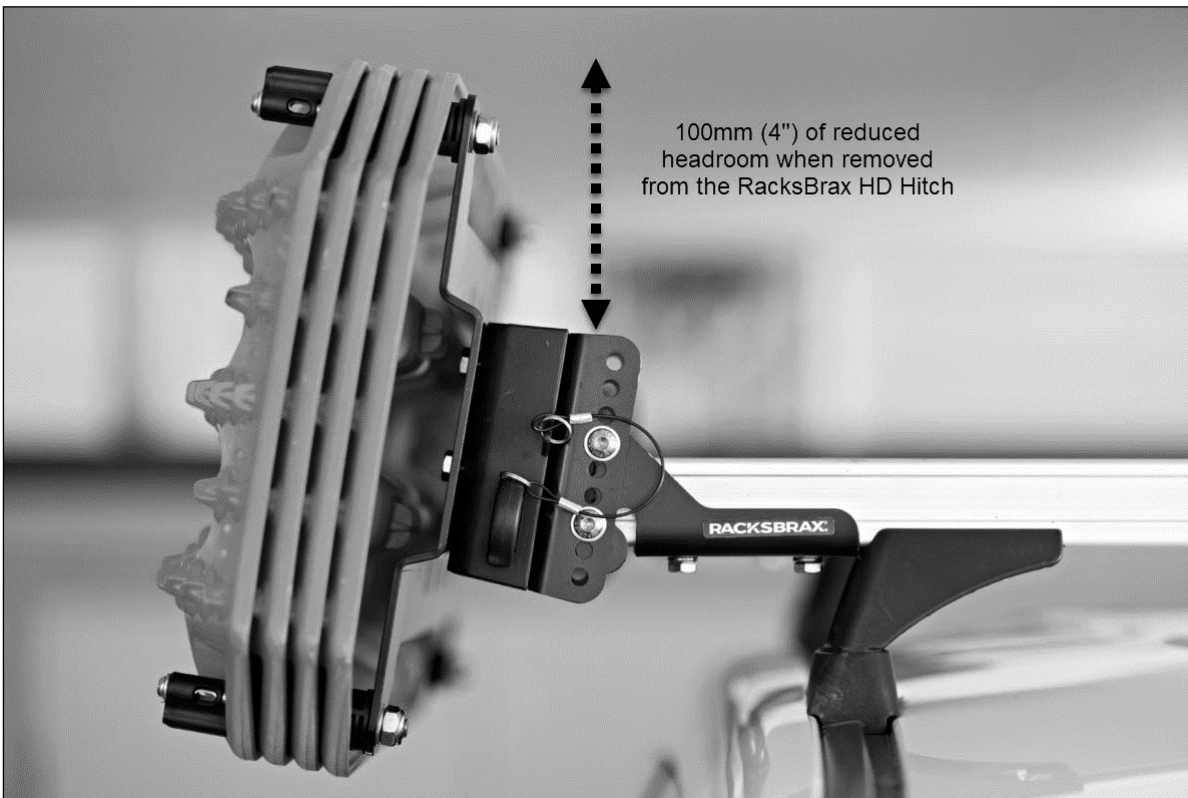


Figure 7 Shows headroom reduction when the recovery Boards and HD Accessory Plate Gen 2 are disconnected from the vehicle improving clearance in garages and car parks.

RACKSBRAX.

HOW MANY RECOVERY BOARDS CAN I CARRY?

Provided suitably strong brackets and fastening method are used, up to 4 recovery boards may be mounted onto the plate held in position by recovery board mounting pins that match the make of the recovery board (i.e. MAXTRAX® or TRED®). Pins are not included.

You will need brackets with fastener hole centres between 40mm (1.6") and 52mm (2"); unless your roof rack is a tray-style rack outlined above (Figure 6) and has side rail supports which you can directly attach a RacksBrax HD Hitch and thus a RacksBrax HD Accessory Plate Gen 2.

WHAT ARE ALL THE HOLES (ROUND, SQUARE AND SLOTTED) ALONG THE TOP AND BOTTOM OF BOTH THE LEFT AND RIGHT PLATES?

The smaller square and the round holes along the top and bottom of the plates are for different types of shovel holder. One square slot on each plate will fit one Rhino-Rack® Stow It Shovel Holder. One round hole on each plate will fit one Yakima® AceO'Spades Shovel Holder.

The pins of both MAXTRAX® and TRED® recovery boards are catered for as indicated in the diagram below.

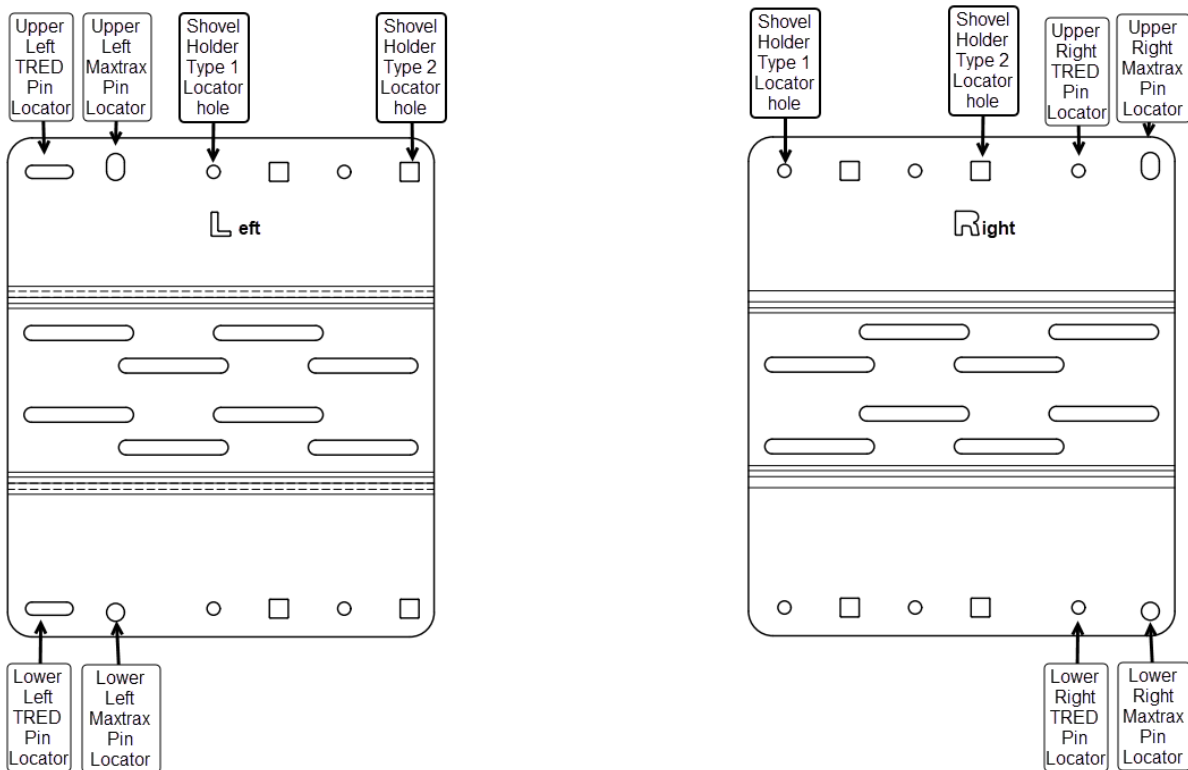


Figure 8 Recovery board pin locators, shovel holder locators.



Figure 9 HD Accessory Plate Gen 2 showing 2 types of shovel holder.

WHAT ARE ALL THE SLOTS ALONG THE CENTRE OF BOTH THE LEFT AND RIGHT PLATES?

The series of horizontal slots along the centre of the plates allow the HD Hitch to be attached at varying horizontal spacing behind the plates to account for the variation in the spacing of roof rack bars and transverse platform slats.

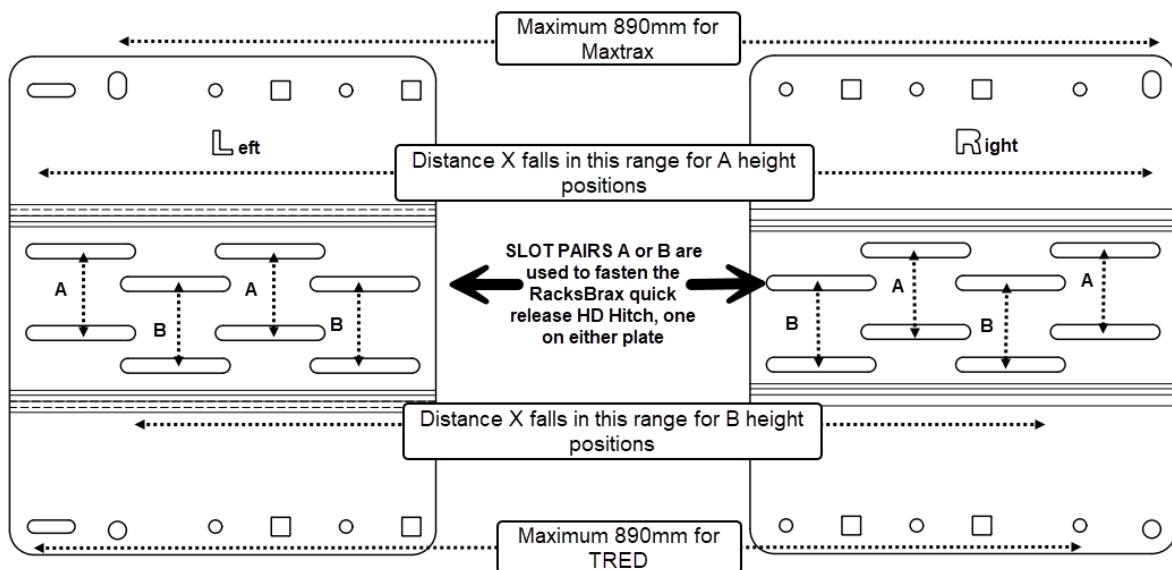


Figure 10 RacksBrax quick release HD Hitch fastener slot pairs A and B.

RACKSBRAX.

The RacksBrax quick release HD Hitch will fit to any matched SLOT PAIRS either A or B, one slot above the other, 50mm apart vertically. Depending on the spacing of the roof rack bars/slats (and the length of the recovery boards, i.e. MAXTRAX® Lite and TRED® Compact) this may be either one upper pair of horizontal slots (A) on plates "L" and "R", or one lower pair of horizontal slots (B) on plates "L" and "R". The upper slots (A) or lower slots (B) dictate the height of the plates and thus the recovery boards.

In situations where the spacing is correct for the roof rack bars/transverse platform slats but the height is not, the two plates may be inverted with the "L" on the left plate upside down but located on the right. This means the "R" on the right plate is upside down but located on the left.

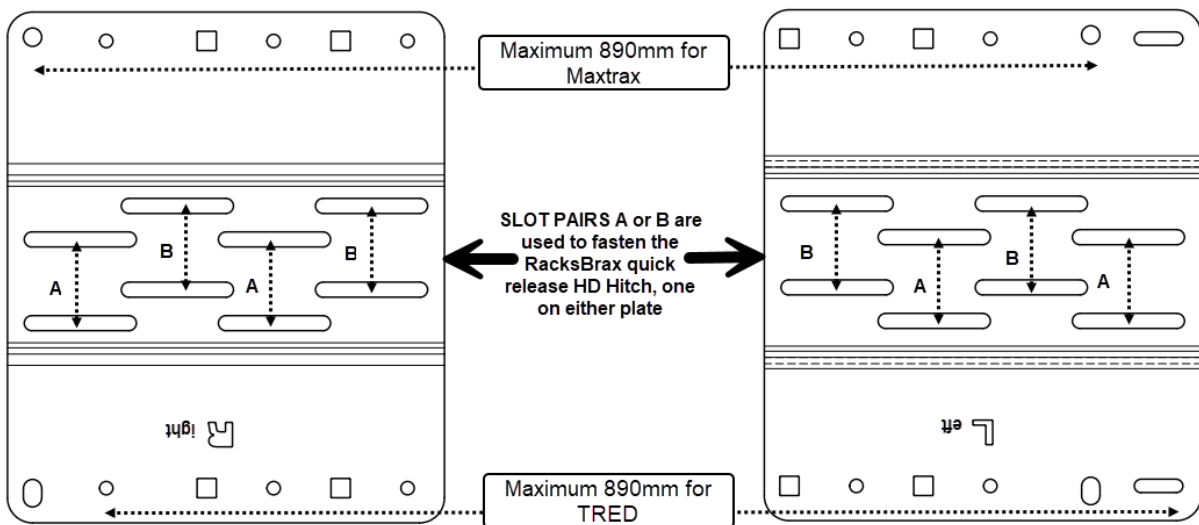


Figure 11 RacksBrax quick release HD Hitch fastener slot pairs A and B with plates inverted.

WHAT DO YOU NEED TO SET UP YOUR RACKSBRAX HD ACCESSORY PLATE GEN 2 - SIDE MOUNTED?

To set up, you will require:

Brackets

A pair of brackets capable of supporting the load of the recovery boards with hole spacings separated vertically by between 40mm (1.6") and 52mm (2").

RacksBrax HD Adjustable Brackets (height and angle adjustable) and RacksBrax HD L Brackets can be purchased separately and are fully compatible with our entire HD Range. The former, seen in Figure 7 and 9 above, allows adjustment of the bracket to 15 degrees off vertical (or vertical) and up and down. The latter allows recovery boards to be stored vertically. For more information refer to the website.

RACKSBRAX.

RacksBrax Quick Release HD Hitch (Standard) 8159

To enable a quick release option, you will require an HD Hitches Standard (8159) (contains two Hitches) sold separately.

RacksBrax HD Accessory Plate Gen 2 (8210)

This plate (pair) acts as a horizontally adjustable bridge between bars/slats and recovery board pin locations.

Recovery Board Mounting Pins

A set of 4 pins will be required to suit your MAXTRAX® or TRED® Recovery Boards (not included).

Table 1 HD Accessory Plate Gen 2 Parts List – refer to exploded view below

	PART	QUANTITY
1	*SS304 Nut Nyloc style M8	8
2	**SS304 Washer Flat M8 X 17 X 1.2	8
3	Bracket (Not included)	0
4	HD Hitch Body (Not included)	0
5	HD Hitch Pin (Not included)	0
6	EDPM Buffer Washer 30 x 24 x 3	2
7	SS304 Buffer Washer M8 x 16 x 3	2
8	***SS304 Washer Mud M8 X 22mm	8
9	SS304 Set Screw M8 X 30	2
10	*SS304 Set Screw M8 X 20	4
11	*SS304 Holder Washer M8 x 32 x 22.5 x 2	2
12	+SS304 Washer Mud M6 x 18mm x 1.4	4
13	HD Hitch Holder (Not included)	0
14	Recovery Board Pin (MAXTRAX® or TRED®) (Not included)	0
15	*SS304 Set Screw M8 X 25	2
16	HD Accessory Plate Gen 2 LHS	1
17	HD Accessory Plate Gen 2 RHS	1
18	RB-POL-004 - -Warranty and Safety Warnings	1
19	RB-INS-020a - Instructions	1

* All of these are supplied with the HD Hitch.

** 8 of 12 of these are supplied with HD Hitch.

*** 8 of 10 of these are supplied with the HD Hitch.

+ These are an additional washers used only on the rear of the HD Accessory Plate Gen 2 if using (M6) TRED® Pins.

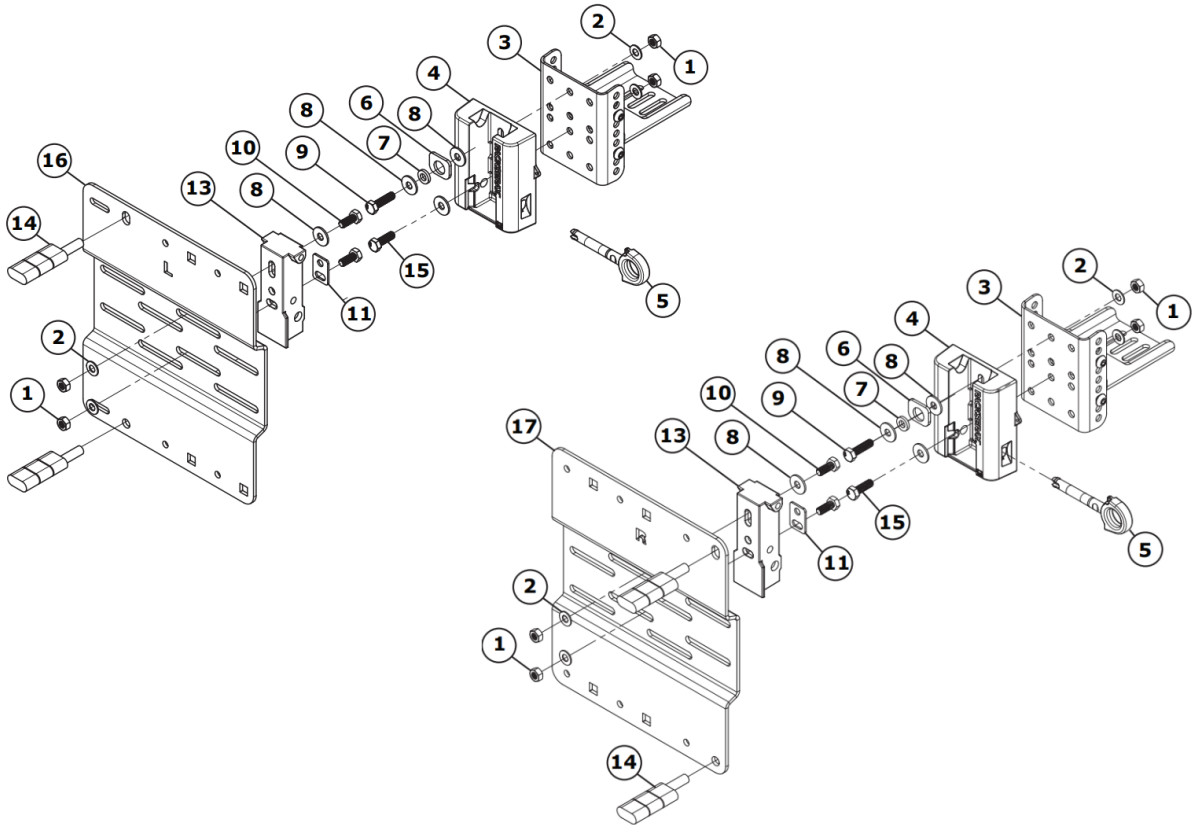


Figure 12 HD Accessory Plate Gen 2 – Fastener arrangement. Refer to Table 1 above.

RACKSBRAX.

STEPS TO FITTING THE RACKSBRAX HD ACCESSORY PLATE GEN 2 USING RACKSBRAX HD HITCH

1. Park your vehicle on level ground.
2. Fit the chosen bracket to the roof rack. This separation distance between roof racks and thus brackets may be between 450mm (17 ¾") and 940mm (37") centres.
3. Follow the instructions supplied with the HD Hitch to fit the two RacksBrax quick release HD Hitch Bodies to your bracket uprights. The exception is that there are additional washers supplied with the HD Accessory Plate Gen 2 (in particular items 7 and item 8 with 2 of item 8 at the top of each HD Hitch Body-see Figure 8).
4. Measure the centre-to-centre distances between the two mounted HD Hitches. Call this distance X. This distance may be between 450mm (17 ¾") and 940mm (37").
5. Fit the recovery board pins. TRED® pins use M6 holes on the Right Plate and horizontal slot on Left Plate. MAXTRAX® M10 Holes are on the bottom of each plate and M10 vertical slots are on the top of each plate).
6. Lay out the 2 Accessory Plates (Left and Right) face side up.
7. Place 2 recovery boards over the pins on the plates and fasten with the pins noting at this stage that the plates will move around. Once mounted to the HD Hitch though, the Hitch/plate/recovery board combo will be held tightly will all be held tightly in position.
8. Tip over the Accessory Plate/Recovery Board combo so it has the recovery boards face down.
9. Transfer the measurement (Distance X) to the rear face of the HD Accessory Plate Gen 2.
10. Place an HD Hitch Holder on the back face of each of the Plates at 90 degrees to the horizontal fastening slots in the plate choosing the slots that suit distance X.
11. Accurately mark each HD Hitch Holder position with some tape, one to the Left Plate (labelled "L") and one to the Right Plate (Labelled "R"). You will be fitting them at the same level, i.e. match the horizontal slot height (Slot A or B in Figure 10 and 11) on Left and Right Plates and fasten the Hitch Holders at distance "X", ideally making them symmetrical or close to symmetrical.
12. Check the marks are distance "X" apart.
13. Release the recovery board from their pins and remove them.
14. Fasten the HD Hitch Holders to the back of the recovery plates at the marks made earlier with tape. Make them slightly loose as you may need to adjust these.
15. Mount the two plates into the HD Hitch Bodies on the brackets then load the recovery boards and do up the pins.
16. You may need to adjust the fasteners on the HD Hitch Holders on the plate until you are able to load these smoothly onto the brackets.
17. Once the plates with recovery boards are loaded, insert the HD Hitch pins and the Hitch/Plates/recovery board combo will be held tight in position.
18. Lock the HD Hitch.
19. In a recovery scenario, simply release the recovery board pins to access the boards.